

SENIORS 2021

While you are waiting for us to begin, go ahead and set up your phone with your **birdvilleschools account**.

You will be using this for voting purposes either today or Thursday based on timing.

SENIORS

A couple of things that you need to make sure that you are doing in the final weeks of your Senior year:

- You need to check your birdvilleschools.net email **CONSTANTLY**
***** This is the **only** way that we can communicate with you about upcoming events like **Prom, Senior awards, graduations**, etc.**
- You need to make sure that you taking care of all of your grades, assignments, makeup hours, deadlines, etc. from today until graduation.

SAT Information

On ***Wednesday, March 3, 2021**, Birdville ISD is paying for the SAT School Day for **11th-grade students & eligible 12th grade students** who did not participate on October 14th this school year.

IMPORTANT: STUDENTS MUST COMPLETE THE PARTICIPATION & SAFETY PRE-SCREENING SURVEY BY *February 5, 2021 TO PARTICIPATE.

<https://docs.google.com/forms/d/e/1FAIpQLSde1oZc6BOVTcHFRyRujcjqQWoNwEkYJVjBHliCg4Svc=0&c=0&w=1&flr=0>

Birdville ISD's 2020–21 SAT Suite administration regulations are guided by the College Board's SAT national weekend administration health and safety requirements.

Students are not allowed to enter the school without a mask, which is required to be worn for the duration of testing.

All students and test administration staff are required to wear a mask or protective face covering.

Student seating will adhere to social distancing guidelines during testing.

Students who violate the requirements put in place will be dismissed from the test administration room; if this happens, scores will be canceled.

The CDC recommends taking additional precautions such as:

Gloves, hand sanitizer, or other personal protective equipment (PPE), regular handwashing.

For additional information contact the department of Advanced Academics at 817-547-8936 or the campus SAT School Day Coordinator at 817-547-7084

Campus Improvement Plan

Community Activities/Fliers
for Students

 Daily Announcements

Educational Planning Guide -
Catalog of HS Courses

HB5 Graduate Information

Library

Make an Appointment to See
Your Counselor

MealPay Plus

New to BISD

Photo Gallery

Praise & Thanks for RHS
Faculty & Staff

Safety Zone

School Newspaper - The
Reveille

Senior Corner

Sign Up for B-News District
Newsletter

Skyward Family Access

STAAR Testing

Student Handbooks

Tip Line

Title IX Coordinator

Touch of Class-Staff
Recognition

Tutorial Schedule

Volunteer Application

Volunteer Information

Yearbook, Ordering

RHS Senior Calendar 2021

April 06 - April 15	Prom Ticket Sales (See below)
April 13, Tuesday	Invitation Delivery During Lunches Outside Cafeteria
April 24, Saturday	Prom 7:00-11:00 pm Globe Life Field *
April 25, Sunday	Project Celebration 12:00-5:00 am Alley Cats
April 29, Thursday	Top 12 Recognition Breakfast 7:30 am Omni Room
May 06, Thursday	Cap & Gown Delivery During Lunches Outside Cafeteria
May 13, Thursday	Who's Who, Departmental Awards & Senior Scholarship Assembly 7:00 pm Auditorium
May 17, Monday	Senior Parade 7:00 pm
May 17 - 20	Senior Semester Exams
May 21, Friday	RHS Senior Class Photo on RHS Field (wear gown)
May 27, Thursday	Graduation @ Globe Life Field 12:00 pm (Wear cap and gown and appropriate dress)

- ***Prom Ticket Sales begin on April 06 through April 15 --Ticket Prices are \$90 each**
No tickets sold after April 15
No tickets sold at the door

All fines and fees must be paid and hours made up before you can buy a prom ticket. walk the

PROM TICKET SALES

- **Tickets - \$90 each**
April 6 – April 15

There are 2 ways to
buy Prom tickets:

- Revtrak (online)
- Cash only front office; Ms. White

ALL fees/fines
paid to buy
Tickets !!

No tickets sold after April 16 or at the door



Buy your Prom tickets here

**Create account to login; then follow
instructions**

Our meal this year will be themed
Little Italy.

*** If you are a vegetarian or have
a gluten allergy, email Ms. Carol White
in the front office and ask for the
alternate meal.

Inviting someone
from another
school or
graduated?

You need this
Form from the
Main office or
AP office.



Richland High School
817-547-7000

Richland High School Guest Pass

Event: Senior Prom @ Globe Life Field
Saturday, April 24, 2021 7:00 pm

Richland High School Student: _____

Name of Guest: _____ Are you a current high school student (circle one) yes no
**If no please see the information at the bottom of this page for further instructions. **

Guest's School Name: _____

Guest's Parents Names: _____ Parents Phone Number: _____

All guests must have a picture ID to gain admission to the prom.

I will exhibit appropriate conduct as described by Richland High School guidelines.

Guest Student's Signature

I understand that my son/daughter will be expected to follow Richland High School's school guidelines attending this event.

Guest Parent's Signature

All participants are subject to the rules and regulations of Richland High School. Student conduct which does not comply may result in verbal warnings, parent notification or expulsion from the event. When actions warrant, police



**Prom pictures are available thru
Impressionist photography
Prepay or purchase at Prom**

PROMARAZZI

FREE PROM DRESSES - JEWELRY - ACCESSORIES
WITH HANDLING FEE

Collaboration between
JUNIOR LEAGUE OF ARLINGTON &
ETHEL RANSOM CLUB



Student ID required for pickup.

Due to COVID-19 restrictions, shopping is online with a socially distanced pickup

PICK UP
April 9-11
by Appointment
JLA Center
4002 W Pioneer Pkwy
Arlington, TX 76013

ONLINE SHOPPING OPENS
April 3, 2021

www.federatedwomenfw.org/prom-dress.html

For more information call
Jamie Burchfield (817) 277-9481 or Dione Sims (817) 382-7388

During Prom,

**There will be some photo spots
where you can take pictures with
friends / date using your cellphone.**

GRADUATION IS COMING !!!!

Please look at the following slides concerning dress attire/shoes for guys & girls on this special day.

**** Show your parents as well**

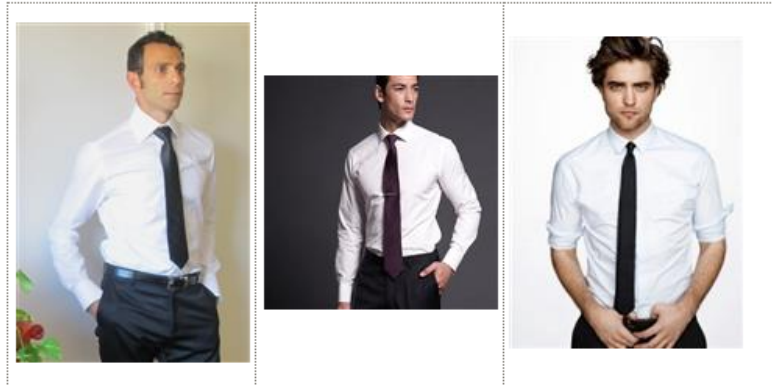


DRESS APPROPRIATELY:

MEN

WHITE DRESS SHIRT & DARK TIE
BLACK or DARK DRESS SLACKS (NO SHORTS)
BLACK or DARK DRESS SHOES AND BLACK SOCKS
EXPOSED PIERCED BODY PARTS ARE RESTRICTED TO THE EARS

Dress Examples:



Dress Shoes Examples:





Select a School...



Translate this page...



SIGN IN

REGISTER



Richland

HIGH SCHOOL

 MENUS

A+
GRADES

 CONTACT

HOME

ADMIN

OUR SCHOOL

ATHLETICS

DEPARTMENTS

FACULTY/STAFF

FINE ARTS

ORGANIZATIONS

COUNSELORS

CALENDAR

WOMEN

DRESS OR SKIRT & BLOUSE THAT IS SHORTER THAN YOUR GOWN.
NO LONG DRESS, SLACKS, JEANS, or SHORTS
BLACK DRESS SHOES (CONSIDER FLATS FOR WALKING PURPOSES) AND HOSE
(OPTIONAL)
EXPOSED PIERCED BODY PARTS ARE RESTRICTED TO THE EARS

Dress Examples:





Select a School...



Translate this page...



SIGN IN

REGISTER



Richland

HIGH SCHOOL


MENUS

A+
GRADES


CONTACT

HOME

ADMIN

OUR SCHOOL

ATHLETICS

DEPARTMENTS

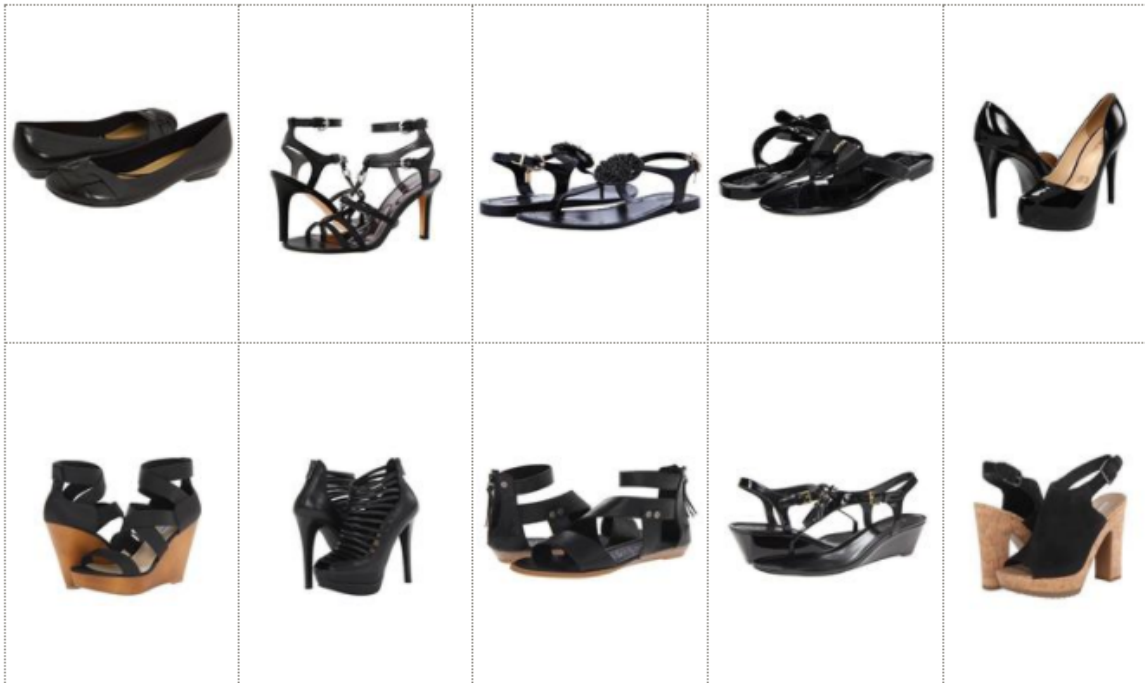
FACULTY/STAFF

FINE ARTS

ORGANIZATIONS

COUNSELORS

CALENDAR





This is the link for this WHOLE presentation

We are about to vote for Prom stuff

Prom Superlatives and class selections

Use the following QR code to vote

